

**Forum on Advancing Article 6 Implementation through Business
Engagement and JCM Project Matchmaking in the Philippines**

SUPPORT THE CREATION OF NATURE-BASED CARBON CREDIT USING SATELLITE DATA



Senior Officer

Masayuki Kurihara

January 21, 2026

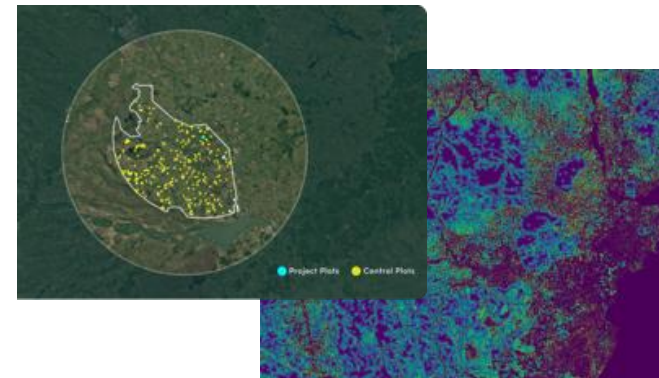
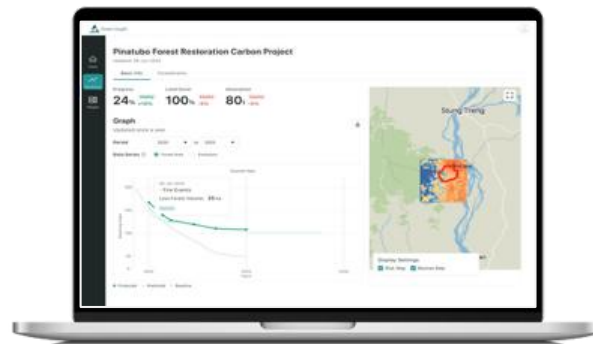
Startup supporting the creation of reliable Nature-based Carbon Credits through monitoring using satellite data analysis for carbon project development.

Our Mission

Unlock the Hidden Value of the Earth.
地球の秘めた可能性を価値にする

Our Solutions

Monitoring Solution using Satellite Data
for Carbon Project Development



*This is a conceptual image. The product is under development.

Green insight – Intelligence for Nature-Based Solutions

We build a satellite- and AI-powered digital MRV platform that enables nature-based project developers and credit buyers to create, verify, and manage high-integrity carbon credits with transparency and scale.

Project Developers



Forest



Rice Paddy

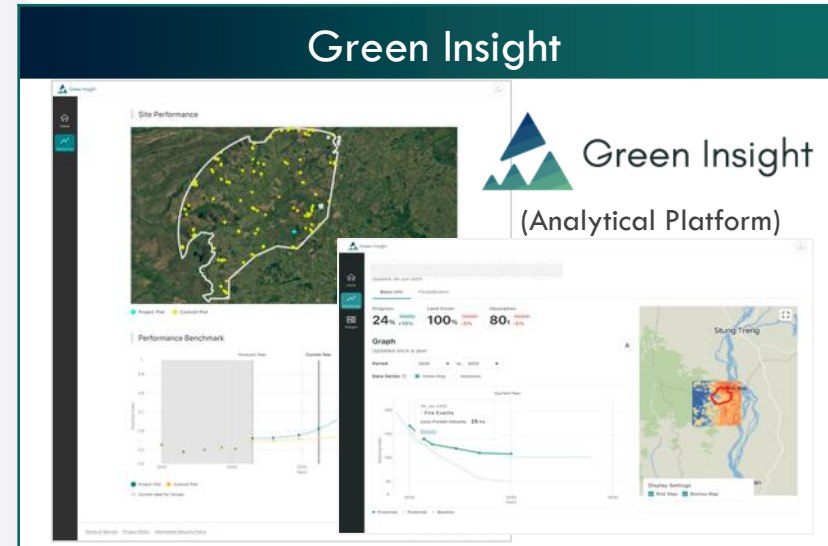
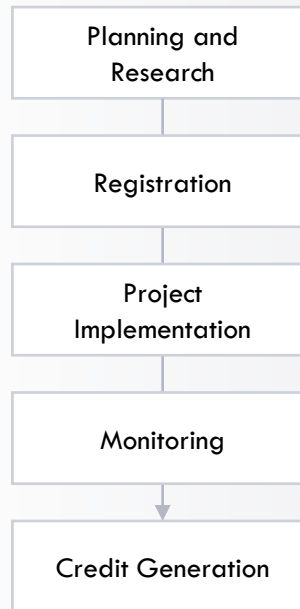


Mangrove



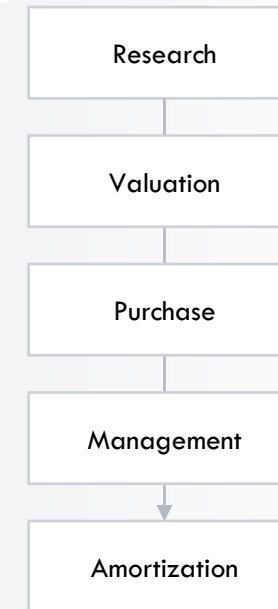
Agriculture

Building a platform for high-integrity nature-based carbon credits and investment management



Intelligence for Nature-based Solutions

Investors / Buyers

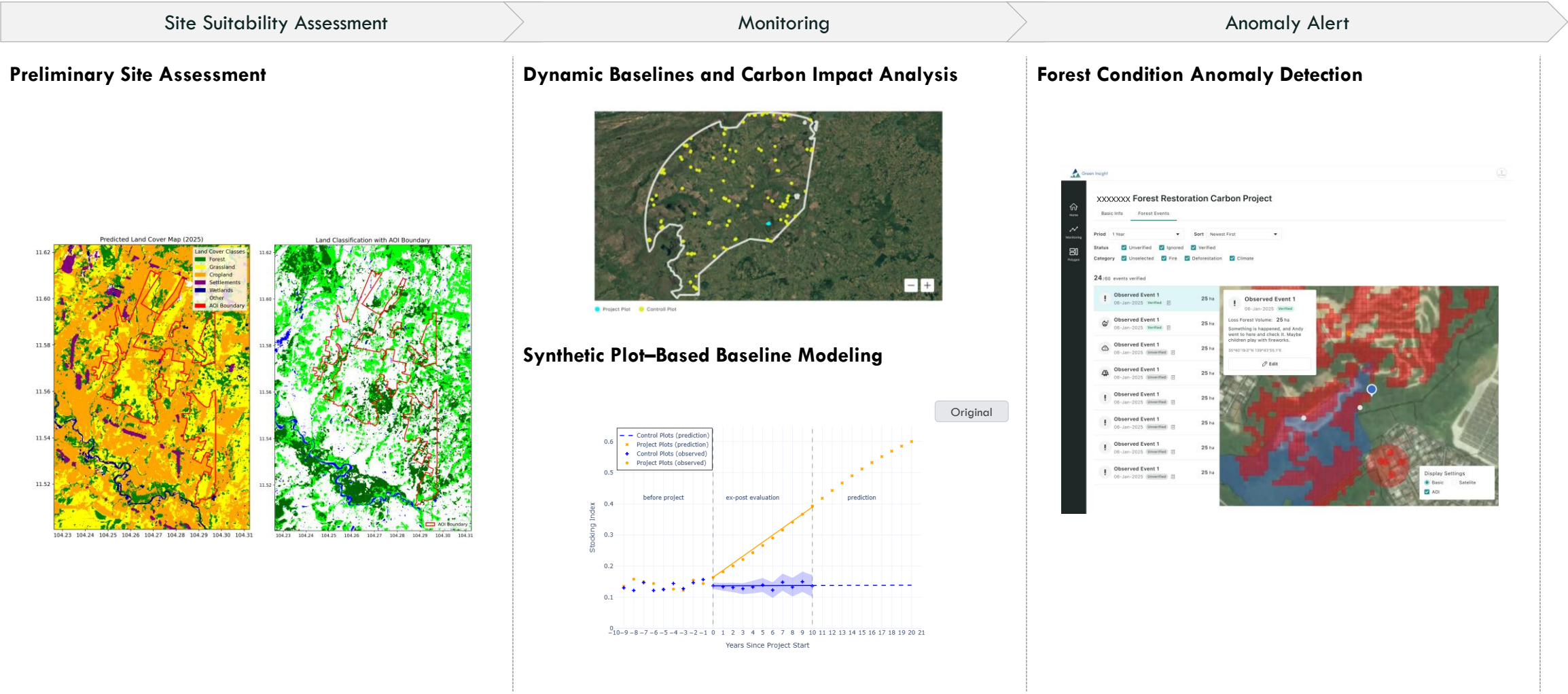


Case Examples

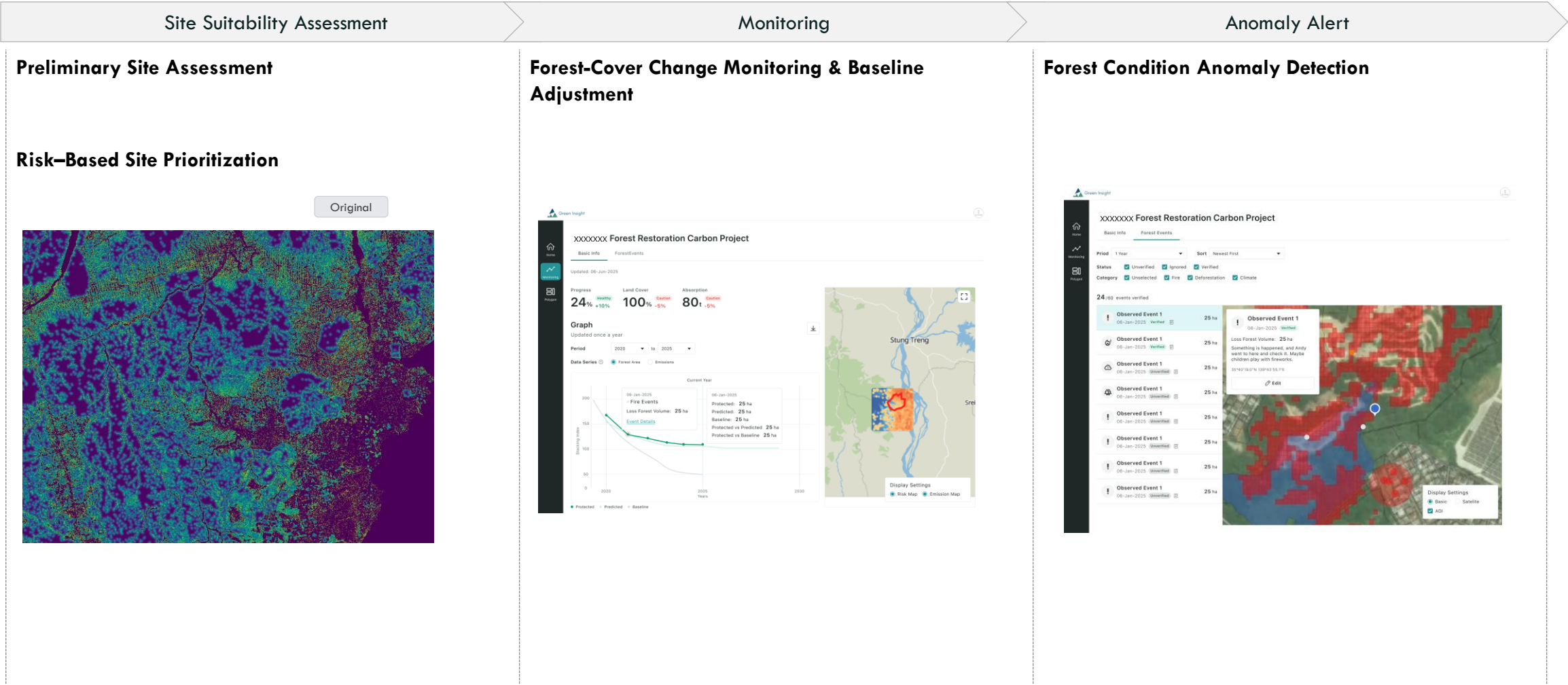
We support Nature-based Solutions project developers across more than five countries through satellite-based monitoring technologies.



We support ARR projects with end-to-end monitoring and analysis—from preliminary site assessment to dynamic baseline modeling, carbon impact evaluation, and anomaly detection.



We support REDD+ projects with end-to-end monitoring and analysis—from high-resolution site prioritization to baseline adjustment and early detection of deforestation risks.



We support AWD projects with remote sensing—based monitoring—from field suitability assessment to flooding-regime tracking and anomaly detection. We're also in the process of updating our analytics solution that leverages JAXA satellite data.

Site Suitability Assessment

Preliminary Field Assessment



Monitoring

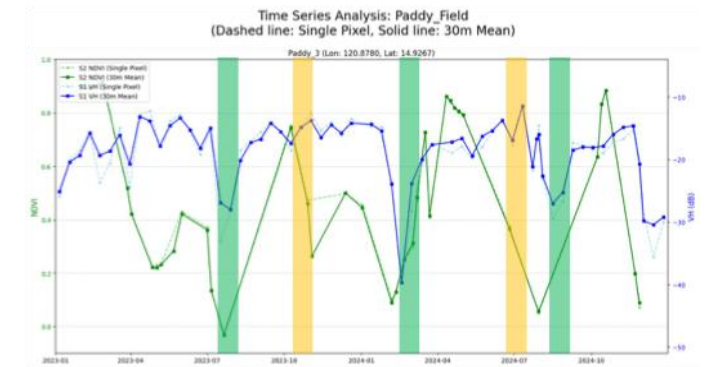
Flooding Regime Monitoring



Stratified Field Classification (Under Development)

Anomaly Alert

Field Condition Anomaly Detection



Who We'd Love to Connect & Collaborate With

We're looking to collaborate with...

- ✓ **Project Developers** — looking to enhance monitoring and reporting capabilities using digital MRV
- ✓ **Investors / Funds** — seeking credible, transparent, and scalable nature-based carbon projects
- ✓ **Corporates & Credit Buyers** — aiming to achieve net-zero goals through high-quality carbon credits
- ✓ **Research Institutions & Agencies** — interested in advancing carbon methodologies and satellite-based analytics

Company Contact

LinkedIn



Website





Archeda

Unlock the Hidden Value of the Earth.