

Carbon Zero for the C&I Market:

Integrated Solutions from Rooftop Solar and Beyond

Alamport Inc.

"Your partner for developing green energy"

"To grow with a developer. To grow as a developer"



Client Confidential

Table of Contents

About us – Company information

Overview Solar PV business

Business Scheme Solar PV business

JCM Model Project location In Indonesia

JCM Implementation Scheme

Next Step Beyond Rooftop Solar

About us – Company information

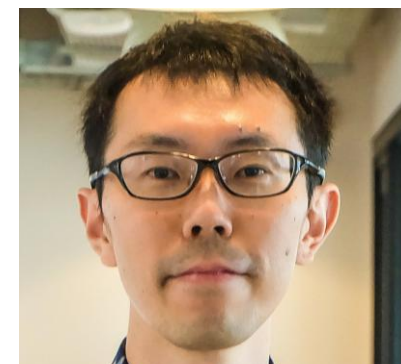
**ENERGY
TRANSITION**

**FOCUS ON
INDONESIA**

**ADVISORY AND
STRATEGIC INVESTMENT**

| | |
|---------------|---|
| Name | Alamport Inc. |
| Address | GOODOFFICE Yurakucho, Kotsukaikan 6F, 2-10-1, Yurakucho, Chiyoda-ku, Tokyo, 100-0006, Japan |
| Shareholders | Management (80%), Shizen Energy Inc. (20%) |
| Management | Fumito Kotani, Soichiro Nishimori |
| Establishment | March 2015 |
| Business | Consulting & advisory and strategic investment in renewables energy business in Southeast Asia |

Team members



Fumito Kotani
*Representative
Director*



**Soichiro
Nishimori**
Director



**Yasuharu
Tokumasu**
*Senior Vice
President*



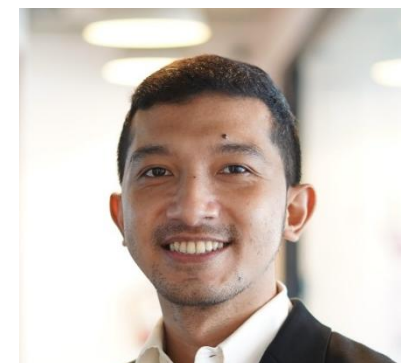
**Jessica
Rolindrawan**
*Senior Vice
President*



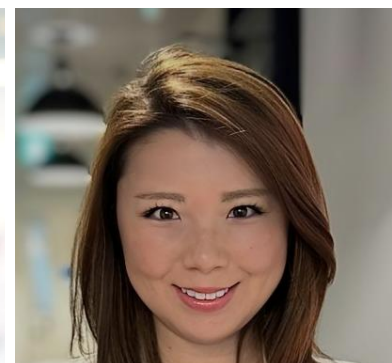
**Marcella
Dyan**
*Vice
President*



**Maritje
Hutapea**
*Senior
Advisor*



Gayo Allaam
*Vice
President*



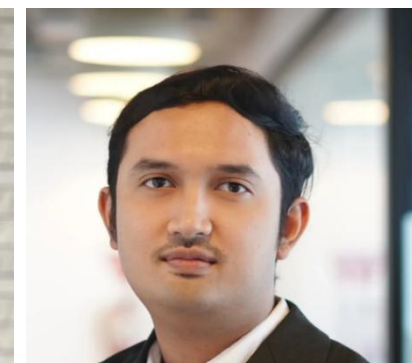
Haruhi Kono
*Vice
President*



**Stefan
Hartono**
*Vice
President*



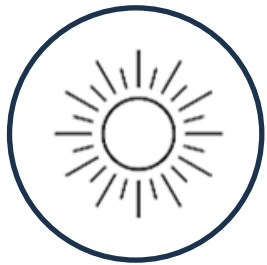
Tamiko Inoue
Manager



**Teugeur
Arigayo**
Manager

Overview

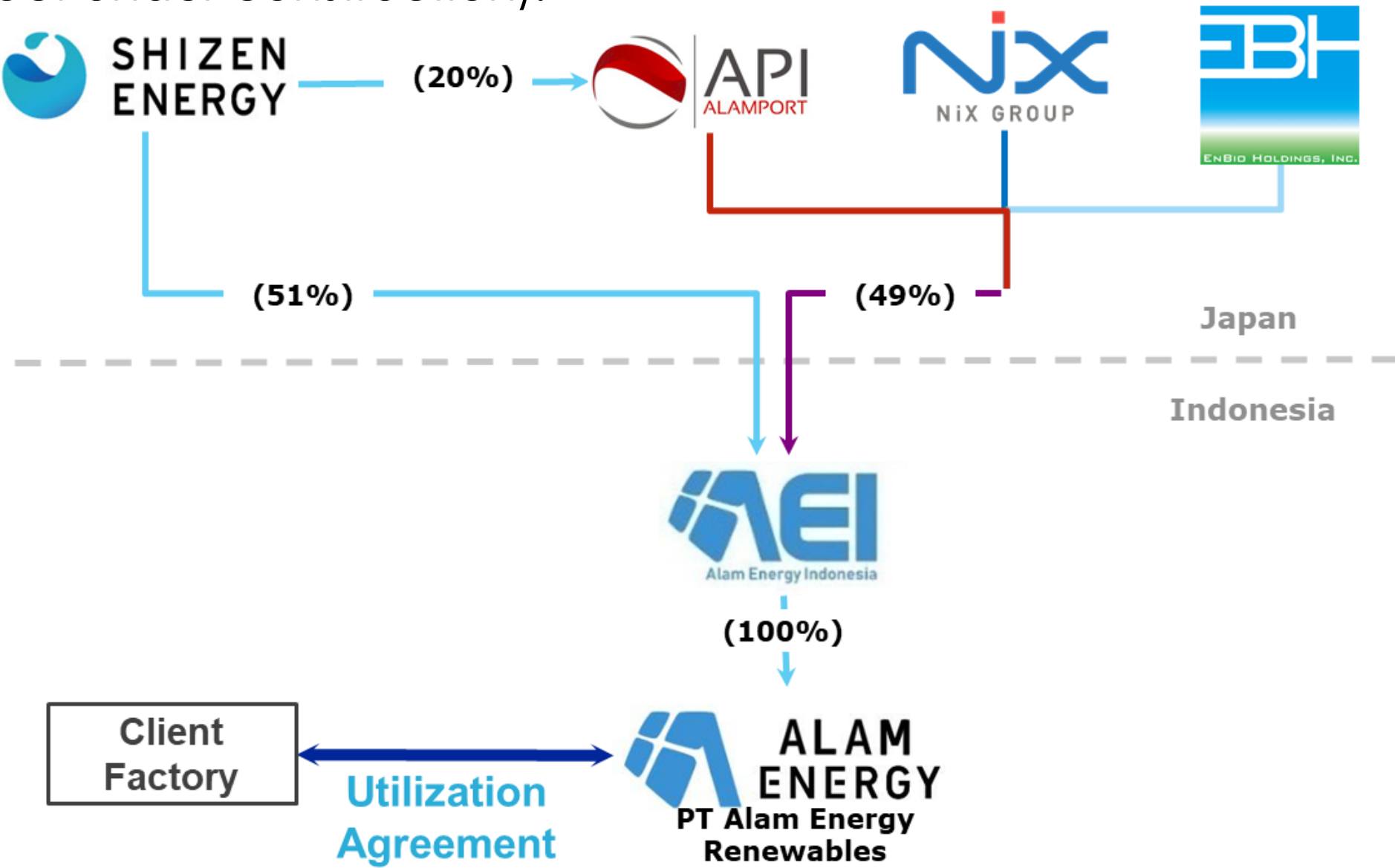
Solar PV business



Alamport established a rooftop solar business in Indonesia through an Indonesian entity named **PT Alam Energy Renewables (“AER”)** together with Japanese renewable energy developers.

AER provides **Solar PV Rental Solution to C&I market**. **As of August 2025, AER has a total of 30 MWp of solar PV projects** (including project under operation and project under construction).

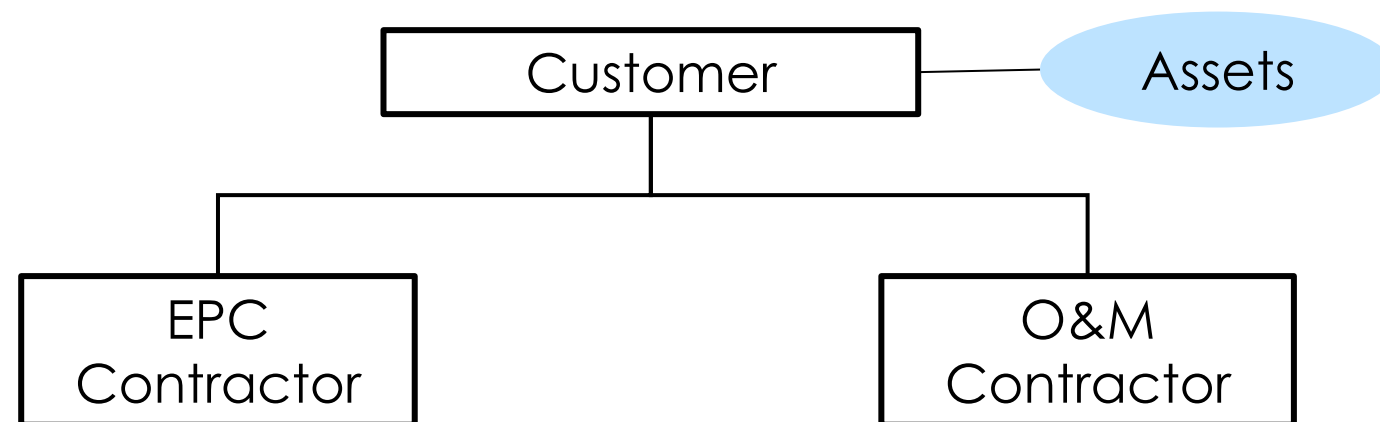
| | |
|--------------------------------------|--|
| Name | PT Alam Energy Renewables (AER) |
| Address | Sinarmas MSIG Tower, Jl. Jenderal Sudirman No.21, Jakarta |
| BOD/BOC (Appointed from Alamport) | Fumito Kotani, Soichiro Nishimori, Jessica Rolindrawan |
| Year of Establishment | 2020 |
| Business | Develop and invest in rooftop solar PV system |



Business Scheme

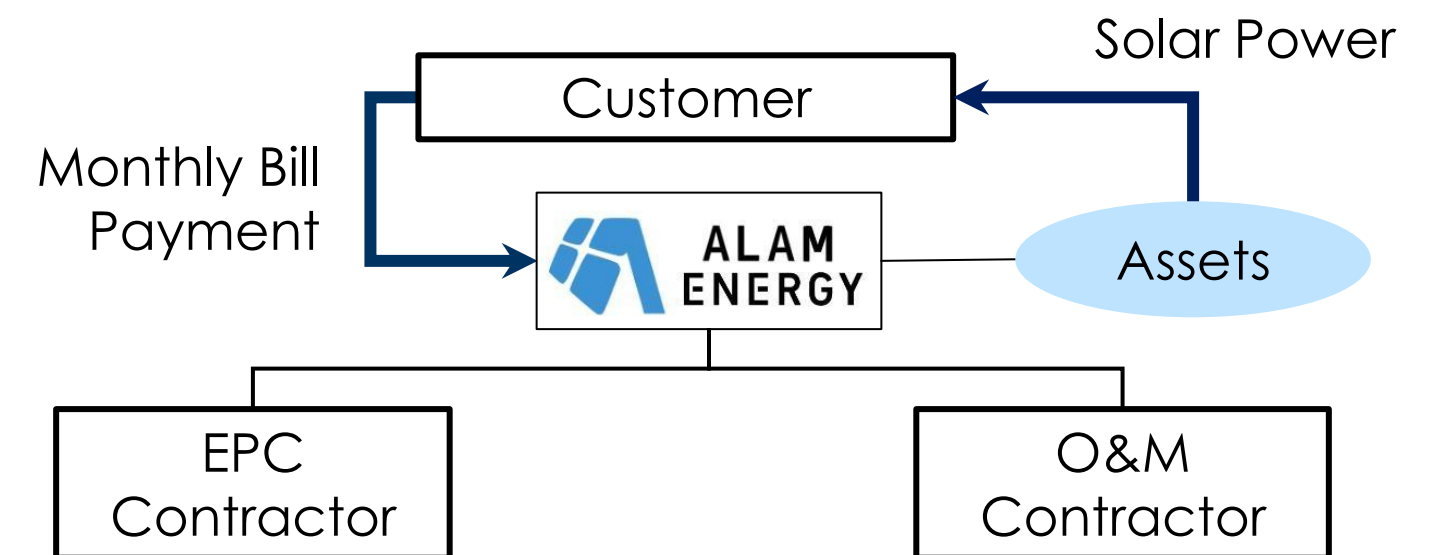
Solar PV business

Self Investment



1. CAPEX required in the first year
2. Time consuming for management and operating (i.e. to negotiate with contractors)
3. Need to choose local EPC/O&M contractor with limited experience

Rental/Utilization Scheme



1. **Zero investment by Customer** (monthly payment based on kWh generated by PV solar)
2. Our well-experienced engineering taking care of EPC selection and management with high quality
3. O&M costs are included in the Fee

JCM Model Project location In Indonesia

| Project Title | Site | Selected Year |
|--|-----------------------------------|---------------|
| 4.2MW Rooftop Solar Power Project to Pharmaceutical Factories, Vehicles Dealers, and Timber Factories | West Java, East Java, Bali, Batam | 2020 |
| Introduction of 3.1MW Rooftop Solar Power System to Fast-Moving Consumer Goods and Printing Factories in Java Island | West Java | 2022 |
| Introduction of 3MW Rooftop Solar Power System to Paper Factory in Java Island | West Java | 2023 |

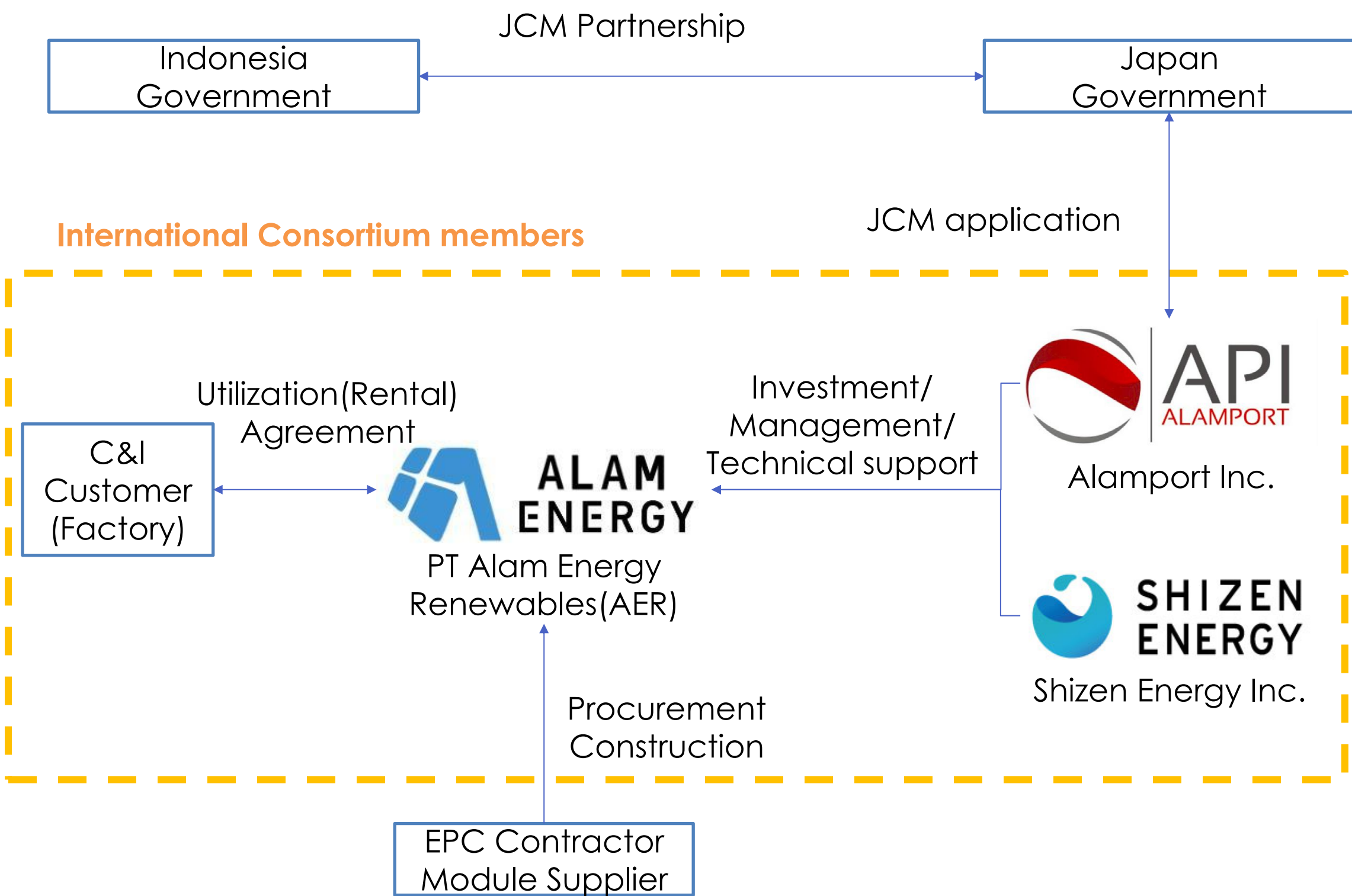


<Project drone photo>



Total
6 Customers
16 locations
10.3MWp operation

JCM Implementation Scheme



| Entity | Responsibility |
|--|--|
| Japanese Company (Alamport, Shizen Energy) | <ul style="list-style-type: none">• Financing• Technical Support• Project Management |
| Indonesian Company (AER, Customer) | <ul style="list-style-type: none">• Project Operation• Monitoring GHG reduction |

Next Step: Beyond Rooftop Solar

1

Adapt new technology: Solar + Battery – Off grid area / EV fleet

Shizen Energy Group has experience in implementing **off-grid solutions in Japan** and has introduced its own proprietary energy management system.

The company has also invested in the EV fleet management startup, eMotion fleet, and has begun to develop its **EV business**.

->We are open for new business opportunity to utilize our technology

2

Another solution to C&I Market

Rooftop Solar can only replace approximately 10~20% of electricity consumption with clean energy

->Our customer is open for new solution for Carbon Zero



Off grid solution in Japan

eMotionFleet



EV solution

CONNECT WITH US!

"Your partner for developing green energy"

"To grow with a developer. To grow as a developer"

Yasuharu Tokumasu - Senior Vice President

yasuharu.tokumasu@alamport.com

**Jessica Rolindrawan - Senior Vice President
Representative of Indonesia Office**

jessica.rolindrawan@alamport.com

Teugeur Arigayo - Manager

teugeur.arigayo@alamport.com

alamport.net



Client Confidential